



INTERNATIONAL UNION
FOR ROAD-RAIL
COMBINED TRANSPORT

Marketplace Seminar

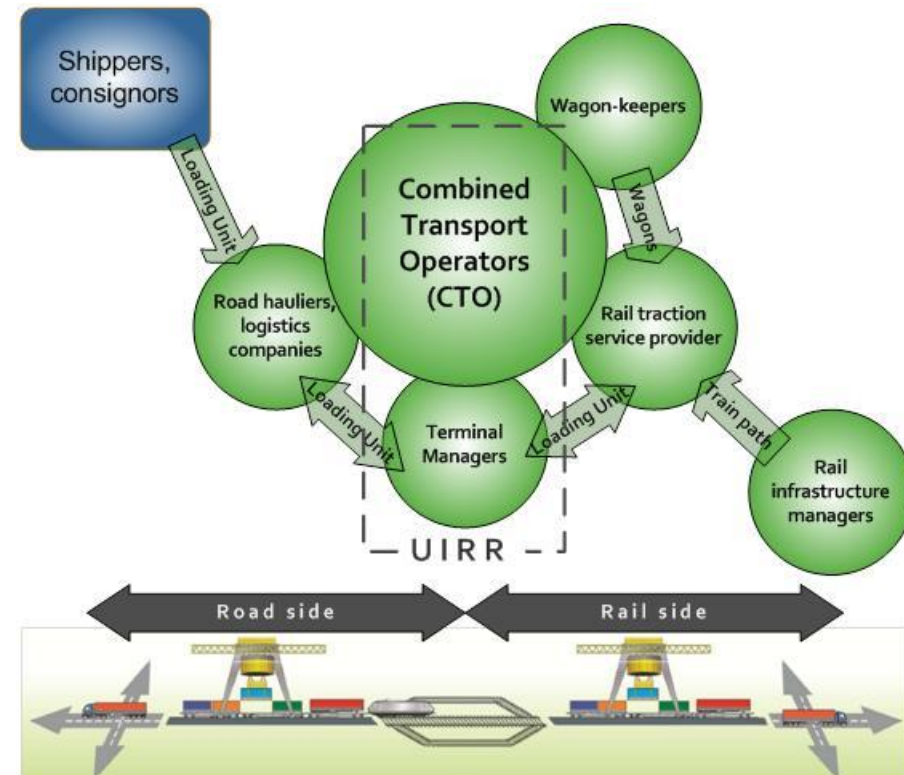
CT TERMINALS AND CT OPERATIONS MOVING FORWARD



Ralf-Charley SCHULTZE
President



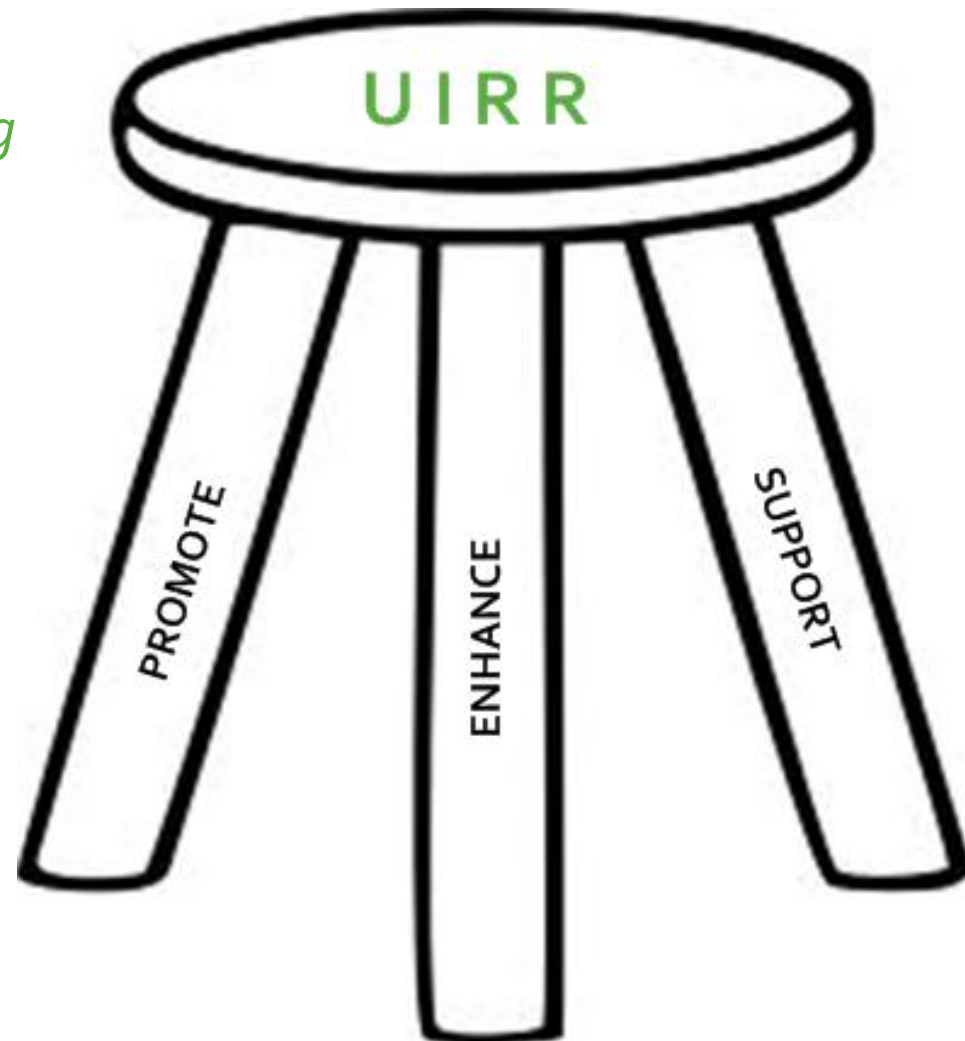
- **Members:** Combined Transport Operators and Terminal Managers, who enable the efficient integration of rail into transport-chains
- **Logistics companies, road hauliers:** customers as well as shareholders of UIRR Members
- **Performance:** UIRR Members handled about 50% of European Combined Transport in 2014
- **Interest:** fair regulatory conditions in transport to enable *competition on the basis of technical merit and competence/management excellence*
- **UIRR:** founded in 1970
- seat in Brussels since 1988





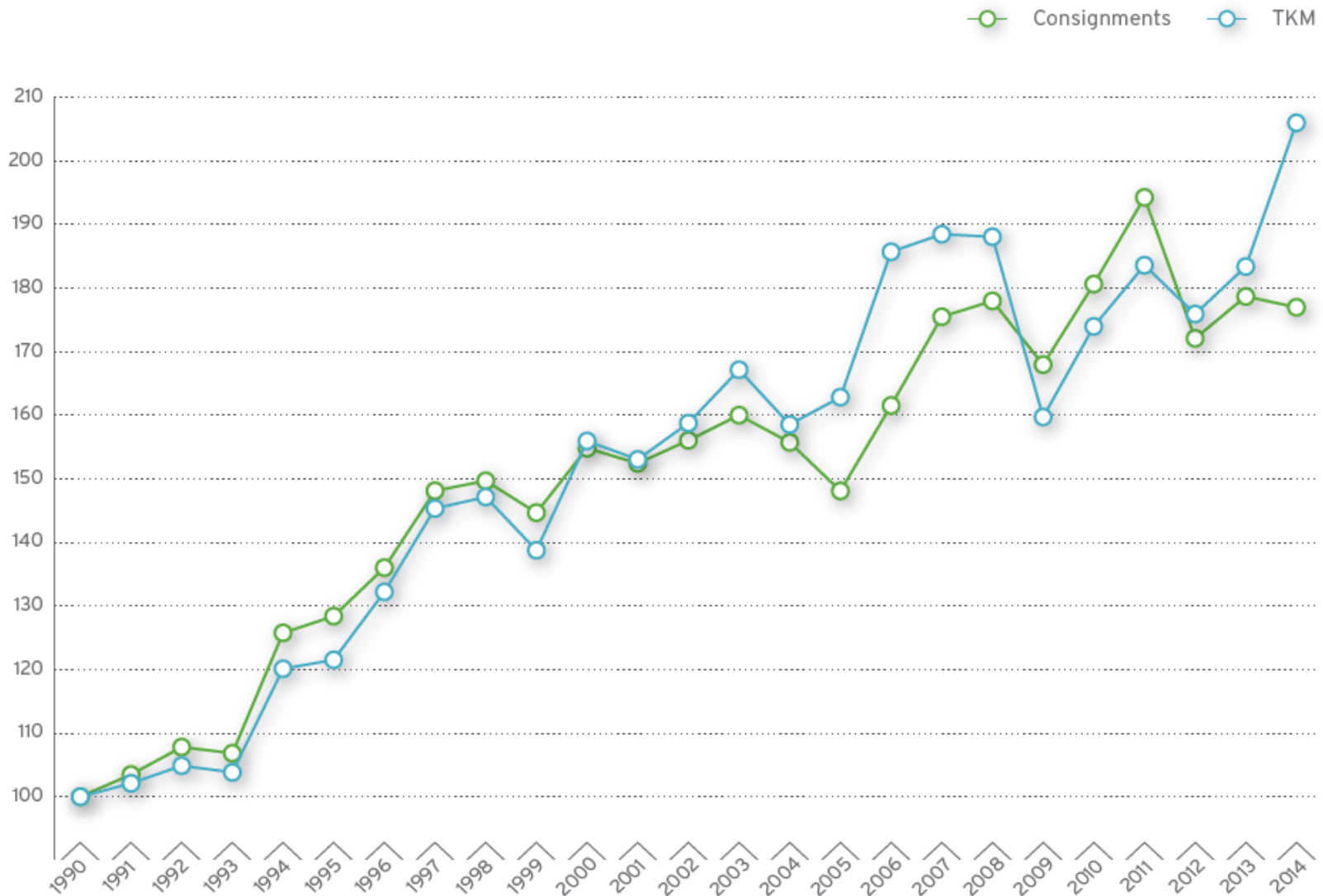
*UIRR is an **industry association** which*

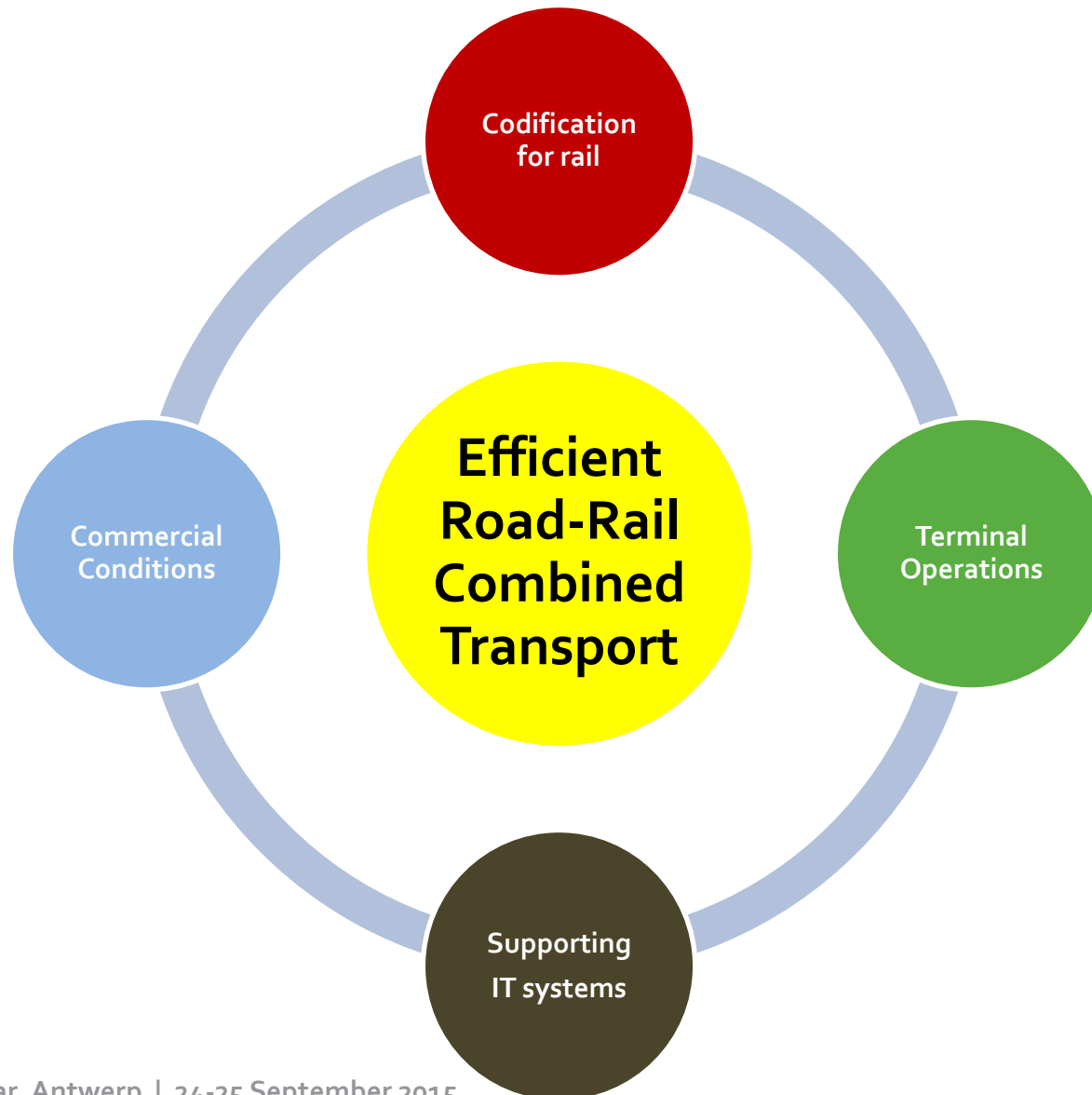
- **PROMOTES** the public understanding and appreciation of Road-Rail Combined Transport*
- **ENHANCES** its development and the proliferation of industry best practice*
- **SUPPORTS** the daily operation of European Combined Transport with a series of services*

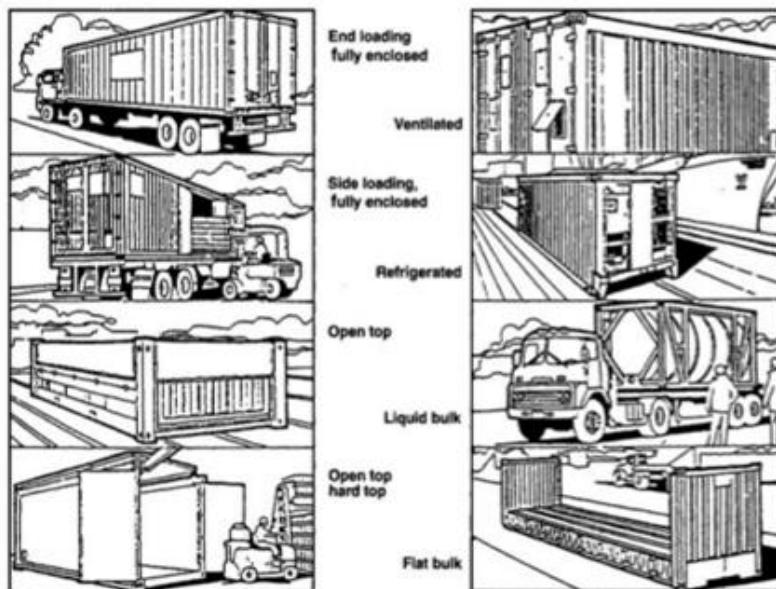


UIRR – Growth rate of Members 1989 – 2014

4



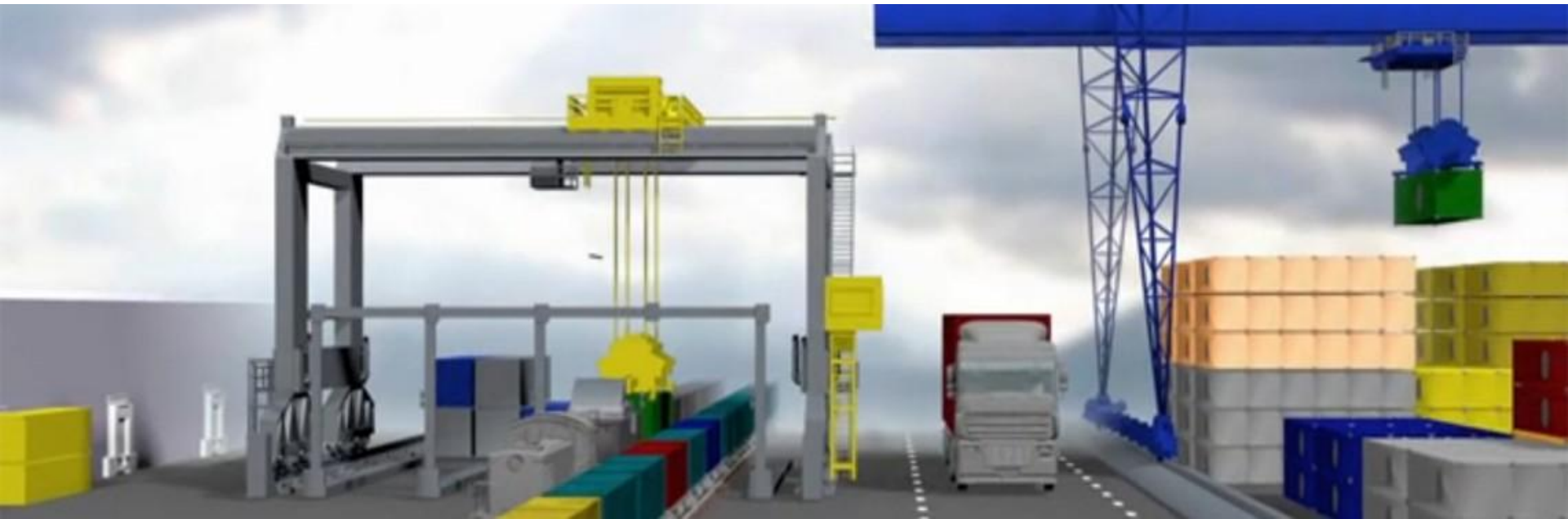




To determine if a
loading unit + wagon combination
can travel on a particular railway line



- **Gaining access: allocation of terminal slots**
 - especially on *Open Access Terminals*
- **Contents of a terminal slot:** basic services / extra services
- **Conditions of entry to the premises**
- **Complaint mechanism**





Standardisation needs

- **UIRR data-message**
 - customer + terminal codes
- **ILU identification**
 - ILU-Code and BIC-Code
- **Tracking and tracing**
 - on ILU basis through entire CT-chain
- **Data entry**
 - OCR
 - RFID
- **Registers**
 - Infrastructure (ERA)
 - ILU
 - Wagon



CT route planners

Terminal Systems

Tracking & Tracing

Customs administration



- **Legal framework**

- Intergovernmental agreements (through OTIF and CIT): COTIF, CIM, CIV
- UNECE Glossary of Terms
- EU law: 4th Railway Package, Rail Freight Corridors, Directive 2015/719, soon-to-be recast Directive 92/106
- ERA TSIs, UIC leaflets, ISO and EN standards, industry best practice

- **UIRR General Terms and Conditions** for CT Operations and new for CT Terminals





SMALL CARBON FOOTPRINT

WEATHER RESILIENCE

LABOUR EFFICIENCY

EASY-TO-USE



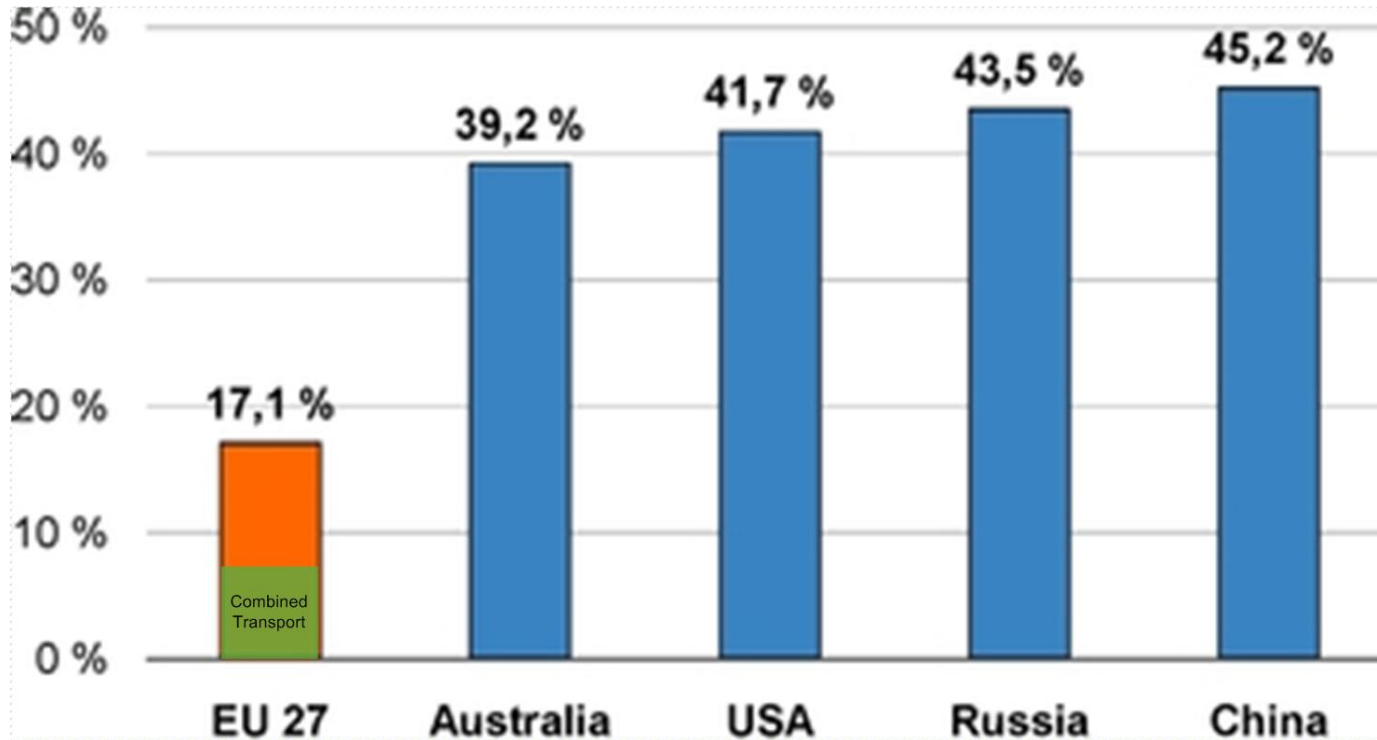
RELIABILITY

SPEED

OUTSTANDING SAFETY

ENERGY EFFICIENCY

SUPERIOR SECURITY



THE RELATIVELY LOW SHARE OF RAIL FREIGHT IN EUROPE PROMISES A CONSIDERABLE UPSIDE POTENTIAL FOR GROWTH IF COMPETITIVENESS CAN BE ENSURED THROUGH – AMONG OTHERS – STANDARDISATION



INTERNATIONAL UNION
FOR ROAD-RAIL
COMBINED TRANSPORT

THANK YOU

For your attention

